

Introduction

This guide assumes that you have Windows XP installed in C: drive.
By the end of this guide, you will be running an Invision Power Board forum from your own computer.

Requirements

MySQL Servers and Clients 4.0.1 or above
PHP 4.3.4 or above
Apache HTTP Server 2.0.44 or above
Invision Power Board Forum Software 1.3 or above
NO-IP DUC 2.1.4 or above (if you have a dynamic IP address)

Download links

All these programs are freeware.

<http://www.mysql.com/downloads/mysql-4.0.html> (mysql-4.0.xx-win.zip)

<http://www.php.net/downloads.php> (php-4.3.x-Win32.zip)

<http://httpd.apache.org/download.cgi> (httpd-2.0.xx-win32-src.zip)

<http://www.no-ip.com/downloads.php> (ducsetup.exe)

<http://www.invisionboard.com/download/> (1p3Final.zip)

Getting started

Installing MySQL

Install MySQL Servers and Clients 4.0.1 in default settings.
It will install in C:\mysql\ directory.

Installing PHP

There is not an installer present for PHP.
Just do the following:

Extract the zip file to C:\

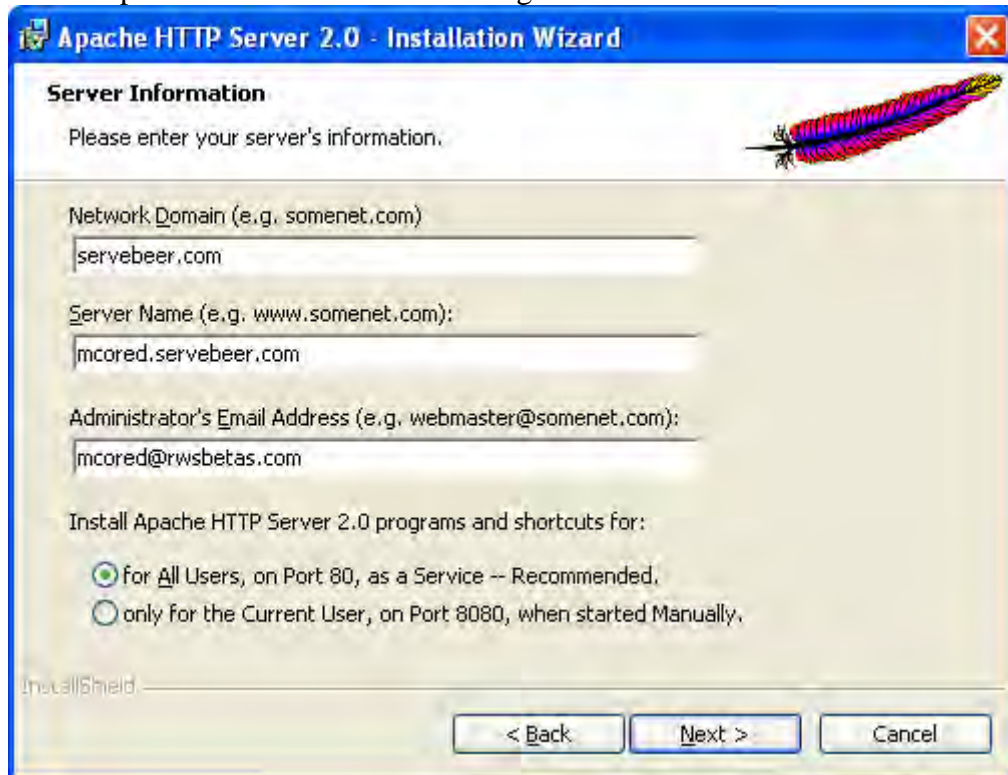
Find the **php.ini-dist** file and rename it **php.ini**.

Move the **php.ini** file to C:\WINDOWS\

Move the **php4ts.dll** file to C:\WINDOWS\SYSTEM\

Installing Apache HTTP Server

Install Apache HTTP Server with settings similar to below:



You can obtain a similar domain name for free (as in the above screenshot). This is will be discussed later.

Installing NO-IP DUC

This section is optional. If you have a static IP address you can use your IP address has your domain.

However if you have a dynamic IP address, then it might be a good idea to get a free host name from www.no-ip.com. The reason for choosing NO-IP is, they have a software that can be installed as a service in the local computer which will automatically detect whenever the IP address changes and update your host names.

Register with www.no-ip.com and obtain a password.

Your username will be your email address.

Use this login details after the installation of NO-IP DUC.

In Windows 2000 or XP you can run NO-IP DUC as a system service.

Configuration

Creating the MySQL account

Start > Run > **C:\mysql\bin\winmysqladmin.exe**

When you start WinMySQLAdmin for the first time, you will be prompted for a username and password.

The application will create the initial MySQL user account on a Windows system.

If you are asked for a username and password by any chance, then you will have to do this manually.

Go to command prompt

To change the password for the root user, do the following

C:\mysql\bin>mysqladmin -u root password MyPassword

MySQL may have also created another account with a blank password with the username of your Windows Account. To change its password:

C:\mysql\bin>mysqladmin -u McoreD password MyPassword

Creating a new SQL database

Go to command prompt

To create a new database called **rwsbetas-dev**, do the following:

C:\mysql\bin>mysqladmin create rwsbetas-dev

Just in case, to delete the database:

C:\mysql\bin>mysqladmin drop rwsbetas-dev

Once you are done, exit Command Prompt.

Integrating PHP with Apache on Windows

To ensure that PHP and Apache get along with one another, you need to add a few items to the **httpd.conf** configuration file.

This file can be accessed from Start > Apache HTTP Server 2.0.xx > Configure Apache Server > Edit the Apache httpd.conf Configuration File.

First, find a section that looks like this:

```
# Example:
# LoadModule foo_module modules/mod_foo.so
#
LoadModule access_module modules/mod_access.so
LoadModule actions_module modules/mod_actions.so
LoadModule alias_module modules/mod_alias.so
LoadModule asis_module modules/mod_asis.so
LoadModule auth_module modules/mod_auth.so
#LoadModule auth_anon_module modules/mod_auth_anon.so
#LoadModule auth_dbm_module modules/mod_auth_dbm.so
#LoadModule auth_digest_module modules/mod_auth_digest.so
LoadModule autoindex_module modules/mod_autoindex.so
#LoadModule cern_meta_module modules/mod_cern_meta.so
LoadModule cgi_module modules/mod_cgi.so
#LoadModule dav_module modules/mod_dav.so
#LoadModule dav_fs_module modules/mod_dav_fs.so
LoadModule dir_module modules/mod_dir.so
LoadModule env_module modules/mod_env.so
#LoadModule expires_module modules/mod_expires.so
#LoadModule file_cache_module modules/mod_file_cache.so
#LoadModule headers_module modules/mod_headers.so
```

At the end of this line, add the following:

```
LoadModule php4_module c:/php-version/sapi/php4apache2.dll
```

For example yours will look like below:

```
#LoadModule headers_module modules/mod_headers.so
LoadModule php4_module c:/php-4.3.2-Win32/sapi/php4apache2.dll
LoadModule imap_module modules/mod_imap.so
LoadModule include_module modules/mod_include.so
#LoadModule info_module modules/mod_info.so
```

Next, look for this section:

```
#
# AddType allows you to add to or override the MIME configuration
# file mime.types for specific file types.
#
```

Add the following lines:

```
AddType application/x-httpd-php .php .phtml .html
AddType application/x-httpd-php-source .phps
```

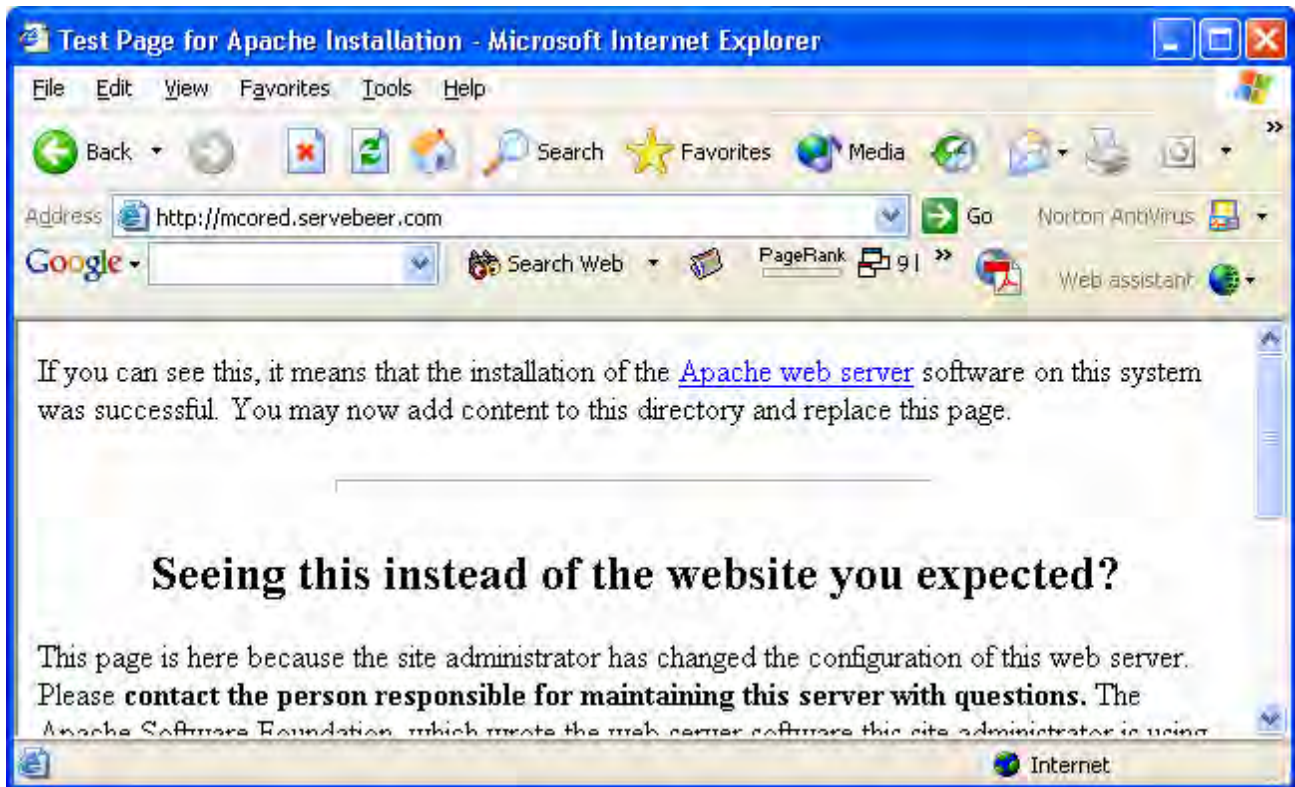
For example yours will look like below:

```
#  
# AddType allows you to add to or override the MIME configuration  
# file mime.types for specific file types.  
#  
AddType application/x-httpd-php .php .phtml .html .htm  
AddType application/x-httpd-php-source .phps  
AddType application/x-tar .tgz  
AddType image/x-icon .ico  
  
#
```

This ensures that the PHP engine will parse files that end with the .php, .phtml, and .html extensions. Your selection of filenames may differ, and you may wish to add .php3 as an extension, for backwards compatibility with any very old scripts you may have.

Moving the root folder location in Apache HTTP Server

If you have successfully done all the steps so far, when you go to your host name, you should see this page loading. (You should be online to do this). Otherwise go to <http://localhost/> to load the page offline.



DocumentRoot

Open the httpd.txt and find a section that looks like this:

```
#  
# DocumentRoot: The directory out of which you will serve your  
# documents. By default, all requests are taken from this directory, but  
# symbolic links and aliases may be used to point to other locations.  
#  
DocumentRoot "C:/Program Files/Apache Group/Apache2/htdocs"
```

Change the DocumentRoot to your desired location.

For example:

```
DocumentRoot "C:/RWSBetas"
```

Do not choose a folder in your My Documents.

Directory

```
# Note that from this point forward you must specifically allow  
# particular features to be enabled - so if something's not working as  
# you might expect, make sure that you have specifically enabled it  
# below.  
#  
#
```

```
# This should be changed to whatever you set DocumentRoot to.  
#  
<Directory "C:/Program Files/Apache Group/Apache2/htdocs">
```

**Change the Directory to the same location as you set for DocumentRoot.
For example:**

```
DocumentRoot "C:/RWSBetas"
```

Directory index

Open the httpd.txt and find a section that looks like this:

```
#  
# DirectoryIndex: sets the file that Apache will serve if a directory  
# is requested.  
#  
# The index.html.var file (a type-map) is used to deliver content-  
# negotiated documents. The MultiViews Option can be used for the  
# same purpose, but it is much slower.  
#  
DirectoryIndex index.html index.html.var
```

The DirectoryIndex Directive tells the Server what file(s) it should look for by default before it displays a Directory Index. Your Web Site is most likely configured so that the Server looks for index.html and index.htm files as the default files. If one of these files exists, their contents are displayed. If neither exists, the Server will create a Directory Listing and display that instead.

Example: A request for <http://www.mydomain.com/> will display the contents of <http://www.mydomain.com/index.html> if the file **index.html** file exists. If the file does not exist, the Server will create a directory listing which will display all of the files and directories in the Document Root.

If you want **Default.htm to be auto detected, change the line as follows:**

```
DirectoryIndex index.html index.html.var Default.htm
```

Same procedure applies for extra files.

If you want **Default.htm to be auto detected, change the line as follows:**

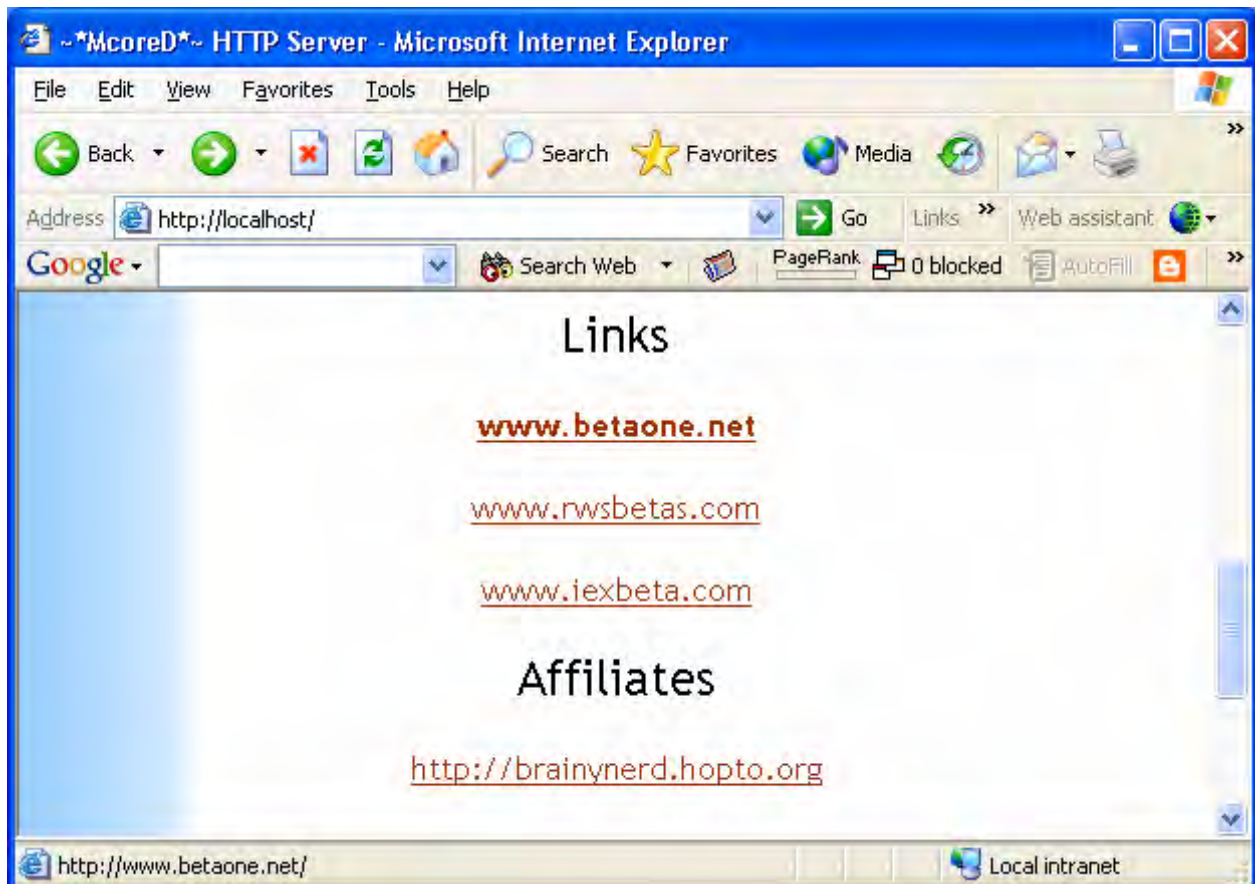
```
DirectoryIndex index.html index.html.var Default.htm
```

Same procedure applies for extra files.

Once you modify these settings, you should stop the Apache service and start again, to see the modifications. You can access this from the Apache tray icon.



Go to your host name or <http://localhost/> to ensure you have modified the settings successfully.



Ensuring PHP configuration is successful

Open notepad

Copy and paste the following

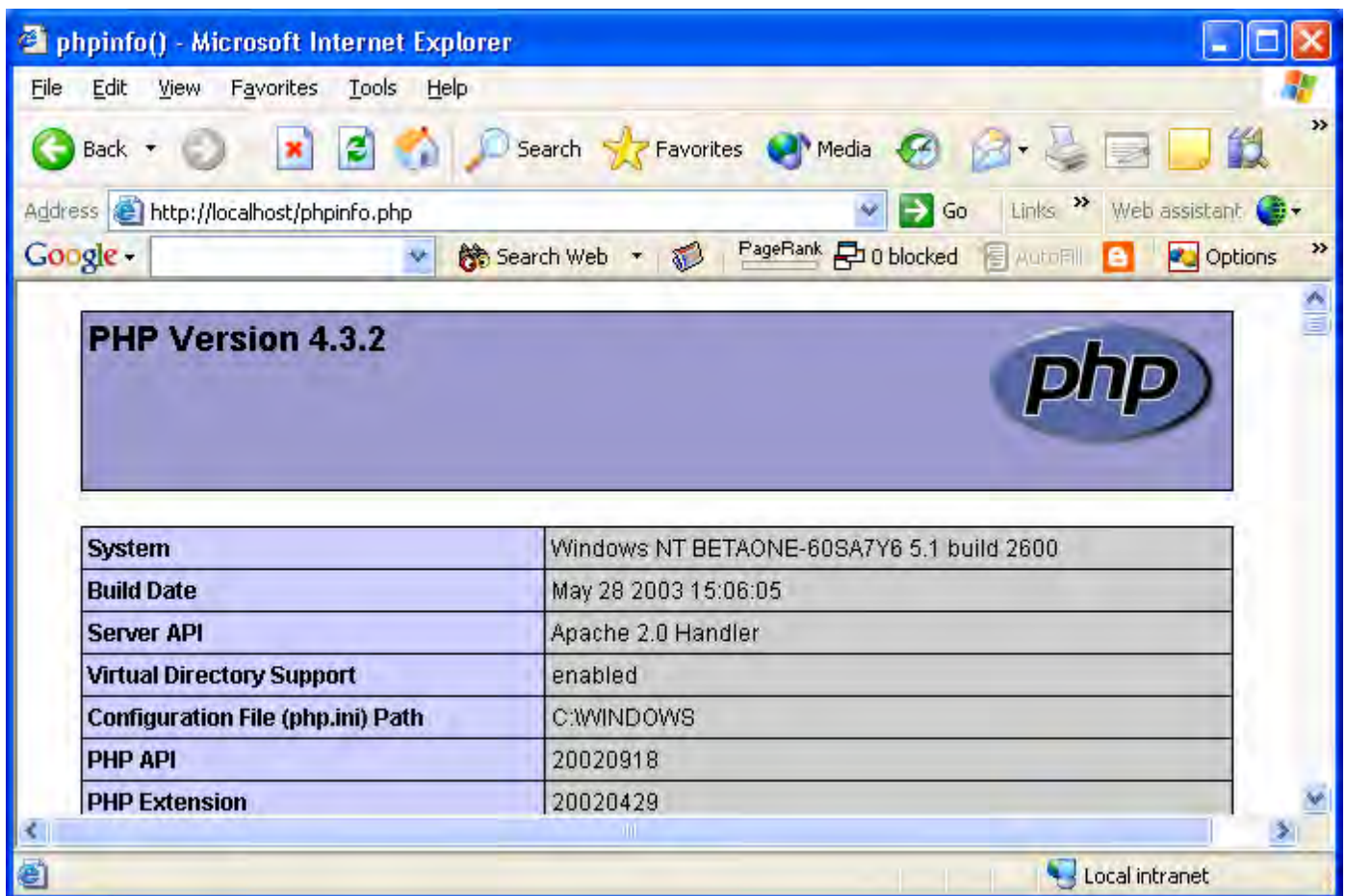
```
<? phpinfo(); ?>
```

Save it as **phpinfo.php**

Move it your Document Root i.e. C:\RWSBetas\

Open Internet Explorer and type <http://localhost/phpinfo.php>

If you see a webpage similar to below, then you are successful.

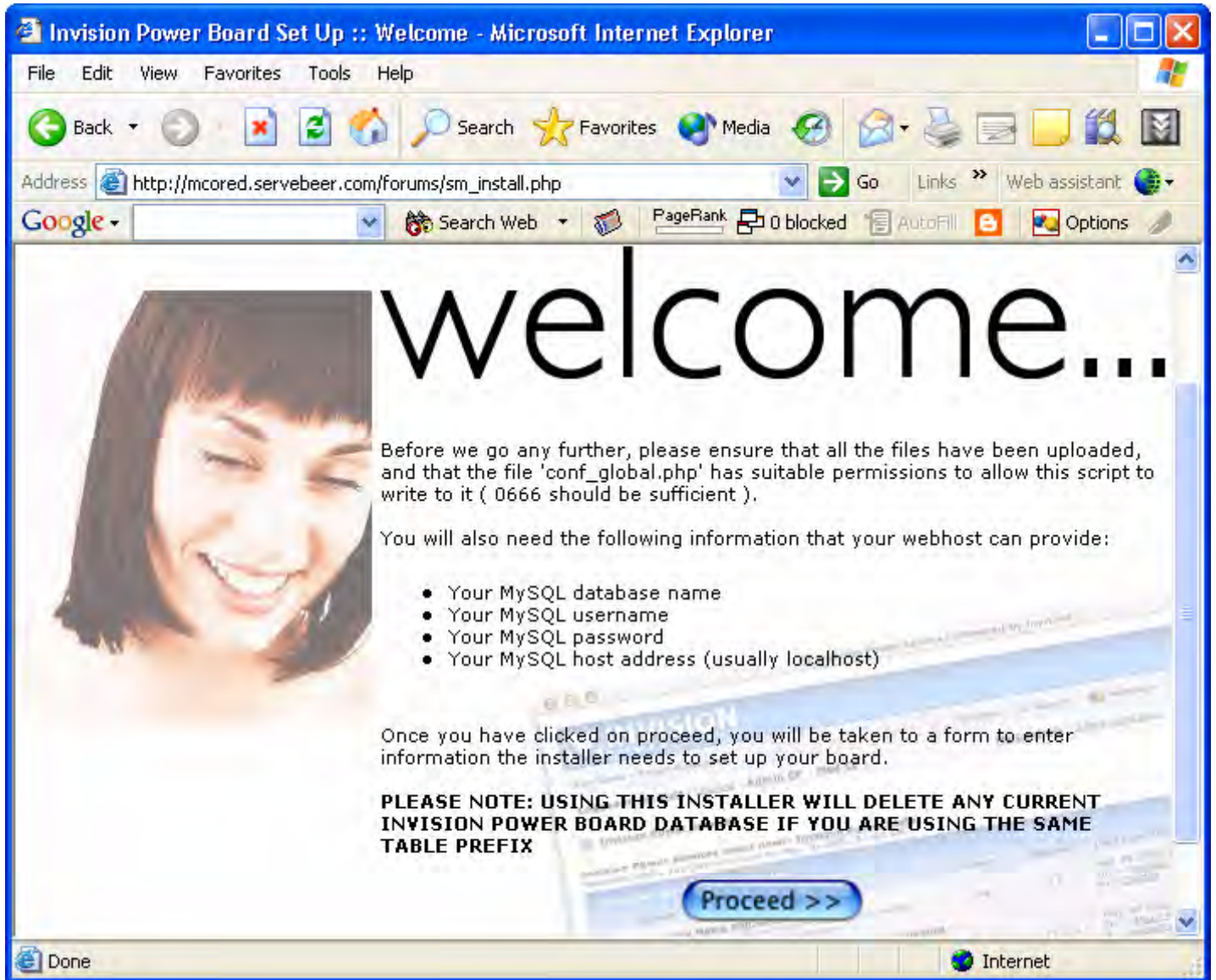


The screenshot shows a Microsoft Internet Explorer browser window titled "phpinfo() - Microsoft Internet Explorer". The address bar contains "http://localhost/phpinfo.php". The page content includes the PHP logo and a table of system information.

PHP Version 4.3.2	
System	Windows NT BETAONE-60SA7Y6 5.1 build 2600
Build Date	May 28 2003 15:06:05
Server API	Apache 2.0 Handler
Virtual Directory Support	enabled
Configuration File (php.ini) Path	C:\WINDOWS
PHP API	20020918
PHP Extension	20020429

Installing Invision Power Board Forum Software

1. Unzip the **1p3Final.zip**.
2. Move the **upload** folder to DocumentRoot e.g. into C:\RWSBetas
3. Rename the uploads folder to **forums** or whatever you like.
4. Run the **sm_install.php** file through your web browser by entering the URL to it into your browser address bar (if you have followed the example, type in http://mcored.servebeer.com/forums/sm_install.php, naturally substituting mcored.servebeer.com for your web address.)



5. Type the MySQL database name (e.g **rwsbetas-dev**)
6. Type the MySQL username and password that you supplied when you started winmysqladmin.exe for the first time
7. Type a username and password for your account of the new board
8. Follow the instructions and you are done! Congratulations! 😊