

Introduction

This guide assumes that you have Windows XP installed in C: drive.
By the end of this guide, you will be running an Invision Power Board forum from your own computer.

Requirements

MySQL Servers and Clients 4.0.1 or above
PHP 4.3.4 Installer or above
Internet Information Systems (included in Windows 2000/XP/2003)
Invision Power Board Forum Software 1.3 or above
NO-IP DUC 2.1.4 or above (if you have a dynamic IP address)

Download links

All these programs are freeware. If the following links do not work, please use www.google.com to find their homepages. You will be able to download those programs from their homepages.

<http://www.mysql.com/downloads/mysql-4.0.html> (**mysql-4.0.xx-win.zip**)

<http://au.php.net/get/php-4.3.4-installer.exe/from/this/mirror> (**php-4.3.4-installer.exe**)

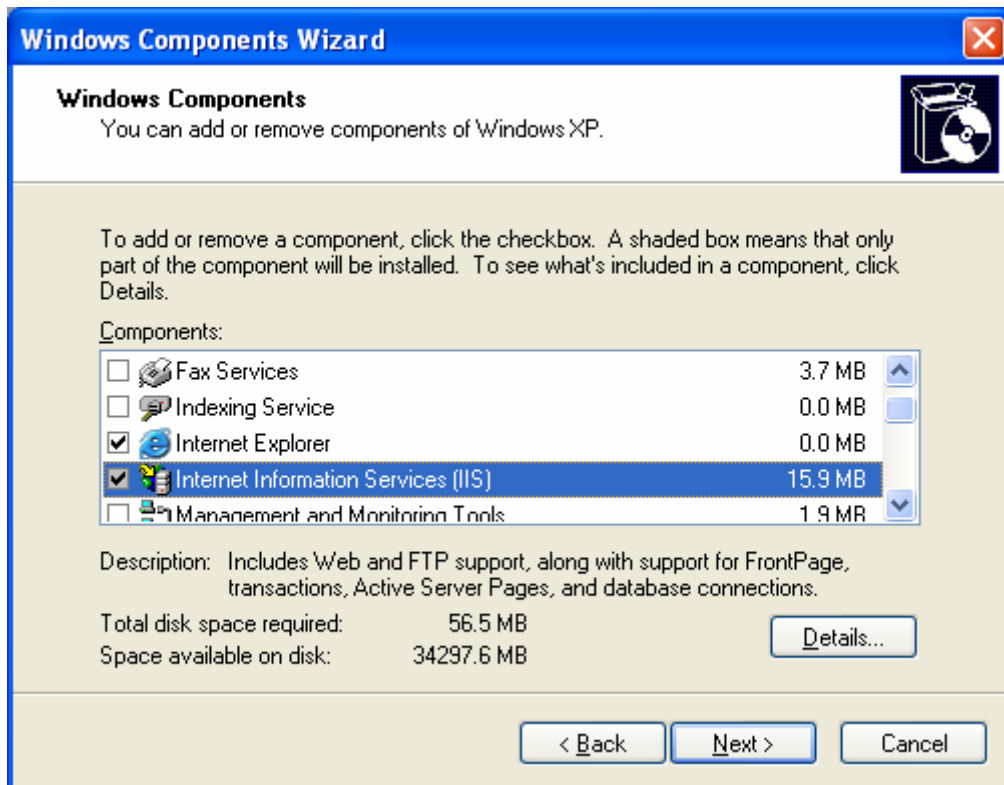
<http://www.no-ip.com/downloads.php> (**ducsetup.exe**)

<http://www.invisionboard.com/download/> (**1p3Final.zip**)

Installing IIS

Installing IIS in Windows 2000/XP

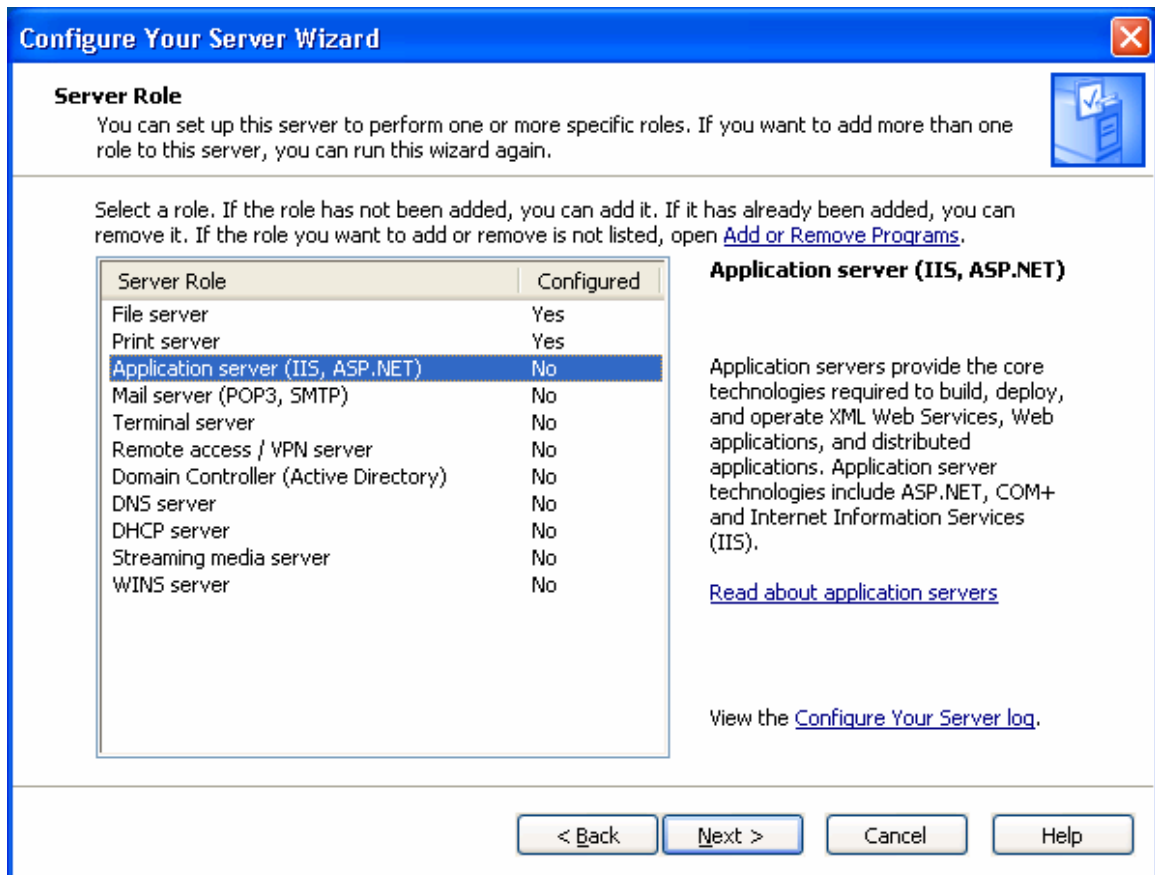
Go to Control Panel > Add/Remove Programs
Click Add/Remove Windows components



Click Next and have your Windows 2000/XP CD ready.
Follow the prompts and you will have IIS installed in your system.

Installing IIS in Windows Server 2003

Go to Start > Administrative Tools > Configure Your Server Wizard
Press Next until you get the following screen

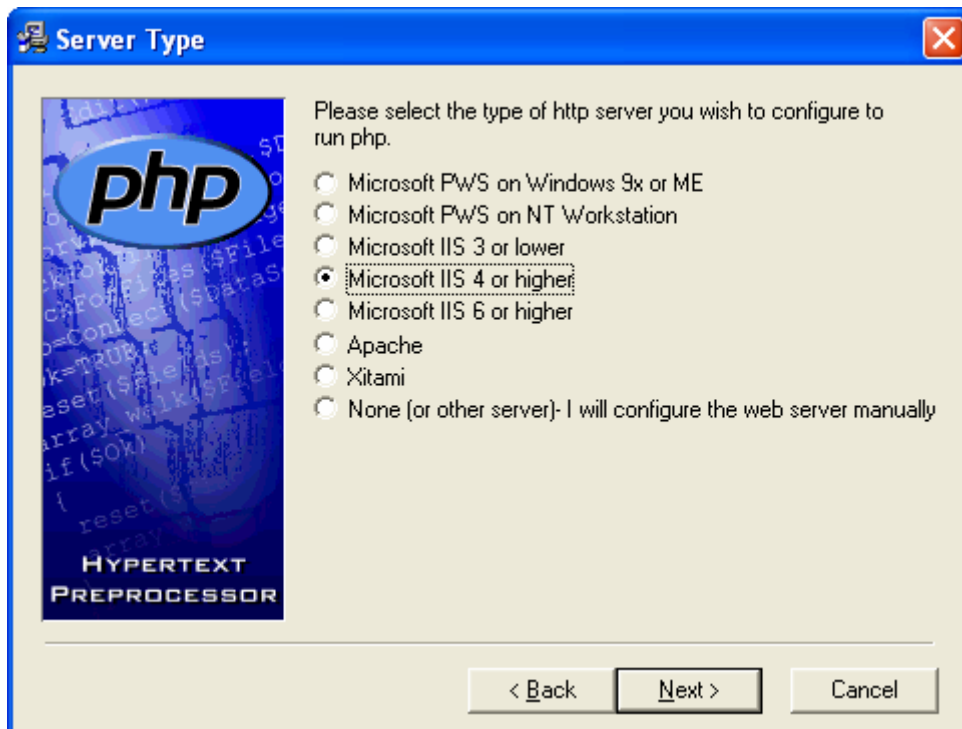


Click Application server (IIS, ASP.NET) and press Next
Enable FrontPage Server Extensions and ASP.NET (optional)
Have your Windows Server 2003 CD ready.
Follow the prompts and you will have IIS6 installed in your system.

Getting started

Installing PHP Installer

Just follow the default settings
It will install in C:\PHP\ directory.
When it comes to Server Type, carefully select the appropriate setting



Microsoft IIS 5.0 or higher is included in Windows 2000/XP
Microsoft IIS 6.0 is included in Windows Server 2003

Ensuring PHP installation was successful

Open notepad
Copy and paste the following

```
<? phpinfo(); ?>
```

Save it as **phpinfo.php** in **C:\Intepub\wwwroot**
Open Internet Explorer and type <http://localhost/phpinfo.php>
If you see a webpage similar to below, then you are successful.



The application will create the initial MySQL user account on a Windows system.

If you are asked for a username and password by any chance, then you will have to do this manually.

Go to command prompt

```
C:\Documents and Settings\McoreD>cd \  
C:\>cd mysql  
C:\mysql>cd bin  
C:\mysql\bin>
```

To change the password for the root user, do the following

```
C:\mysql\bin>mysqladmin -u root password MyPassword
```

MySQL may have also created another account with a blank password with the username of your Windows Account. To change its password:

```
C:\mysql\bin>mysqladmin -u McoreD password MyPassword
```

Creating a new SQL database

Go to command prompt

```
C:\Documents and Settings\McoreD>cd \  
C:\>cd mysql  
C:\mysql>cd bin  
C:\mysql\bin>
```

To create a new database called **rwsbetas-dev**, do the following:

```
C:\mysql\bin>mysqladmin create rwsbetas-dev
```

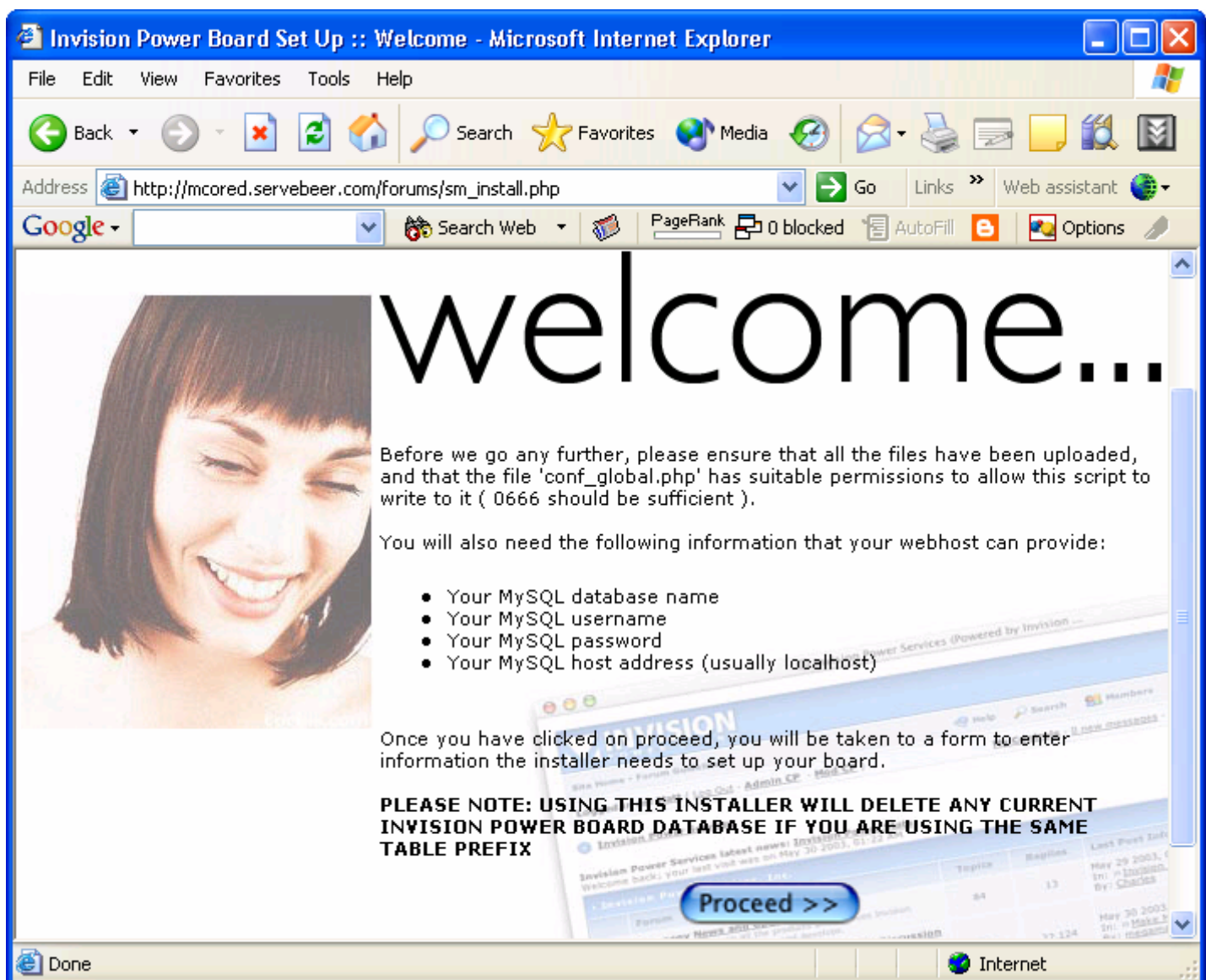
Just in case, to delete the database:

```
C:\mysql\bin>mysqladmin drop rwsbetas-dev
```

Once you are done, exit Command Prompt.

Installing Invision Power Board Forum Software

1. Unzip the **1p3Final.zip**.
2. Move the **upload** folder to DocumentRoot e.g. into C:\Inetpub\wwwroot
3. Rename the uploads folder to **forums** or whatever you like.
4. Run the **sm_install.php** file through your web browser by entering the URL to it into your browser address bar (if you have followed the example, type in http://mcored.servebeer.com/forums/sm_install.php, naturally substituting mcored.servebeer.com for your web address.)



5. Type the MySQL database name (e.g **rwsbetas-dev**)

6. Type the MySQL username and password that you supplied when you started winmysqladmin.exe for the first time. (sometimes you will have to leave the SQL password blank or otherwise you will not be able to proceed)
7. Type a username and password for your account of the new board
8. Follow the instructions and you are done! Congratulations! 😊

Invision Power Board Set Up :: Set Up form - Microsoft Internet Explorer

File Edit View Favorites Tools Help

Back Forward Stop Refresh Home Search Favorites Media Print Mail

Address http://localhost/forums/sm_install.php?a=1 Go

Google Search Web SnagIt Web assistant

Your SQL Environment

This section requires you to enter your SQL information. If in doubt, please check with your webhost before asking for support. You may choose to enter an existing database name, if not - you must create a new database before continuing.

SQL Host (localhost is usually sufficient)	<input type="text" value="localhost"/>
SQL Database Name	<input type="text" value="rwsbetas-dev"/>
SQL Username	<input type="text" value="McoreD"/>
SQL Password	<input type="password"/>
SQL Table Prefix (You can leave this blank)	<input type="text"/>

Your Admin Account

This section requires information to create your administration account. Please enter the data carefully!

Username	<input type="text" value="McoreD"/>
Password	<input type="password" value="*****"/>
Retype your password	<input type="password" value="*****"/>
Email Address	<input type="text" value="mcored@betaone.net"/>

Proceed >>

Done Local intranet