

Introduction

By the end of this guide you will be running a simple HTTP server using IIS with Windows User Accounts integration.

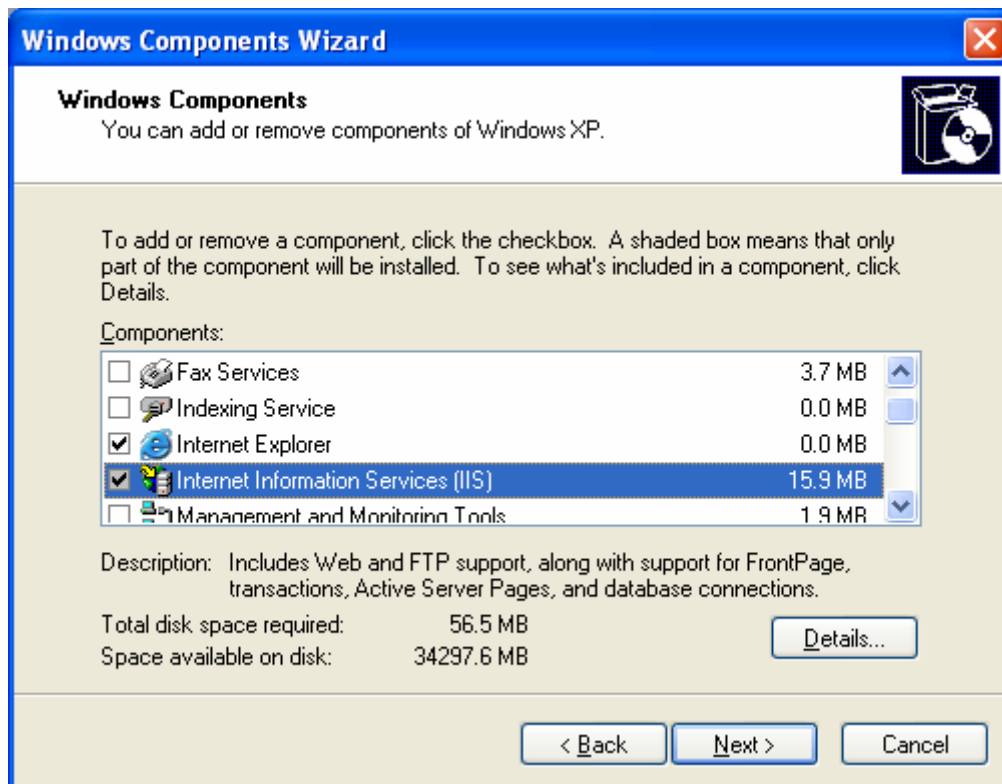
Requirements

Windows 2000/XP/Server 2003
Internet Information Services (IIS) Version 5.1/6.0

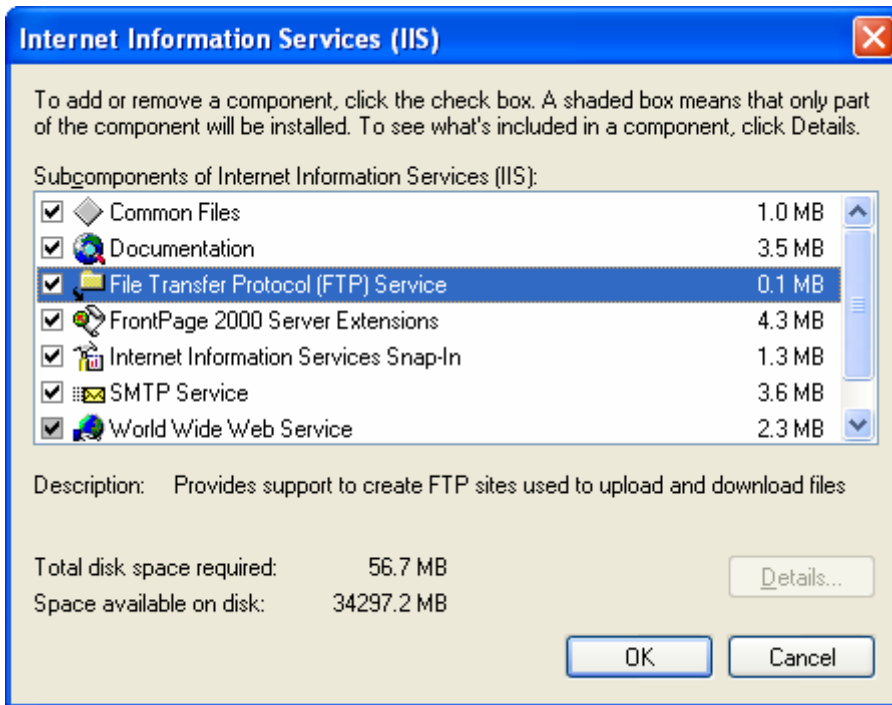
Installing IIS

Installing IIS in Windows 2000/XP

Go to Control Panel > Add/Remove Programs
Click Add/Remove Windows components



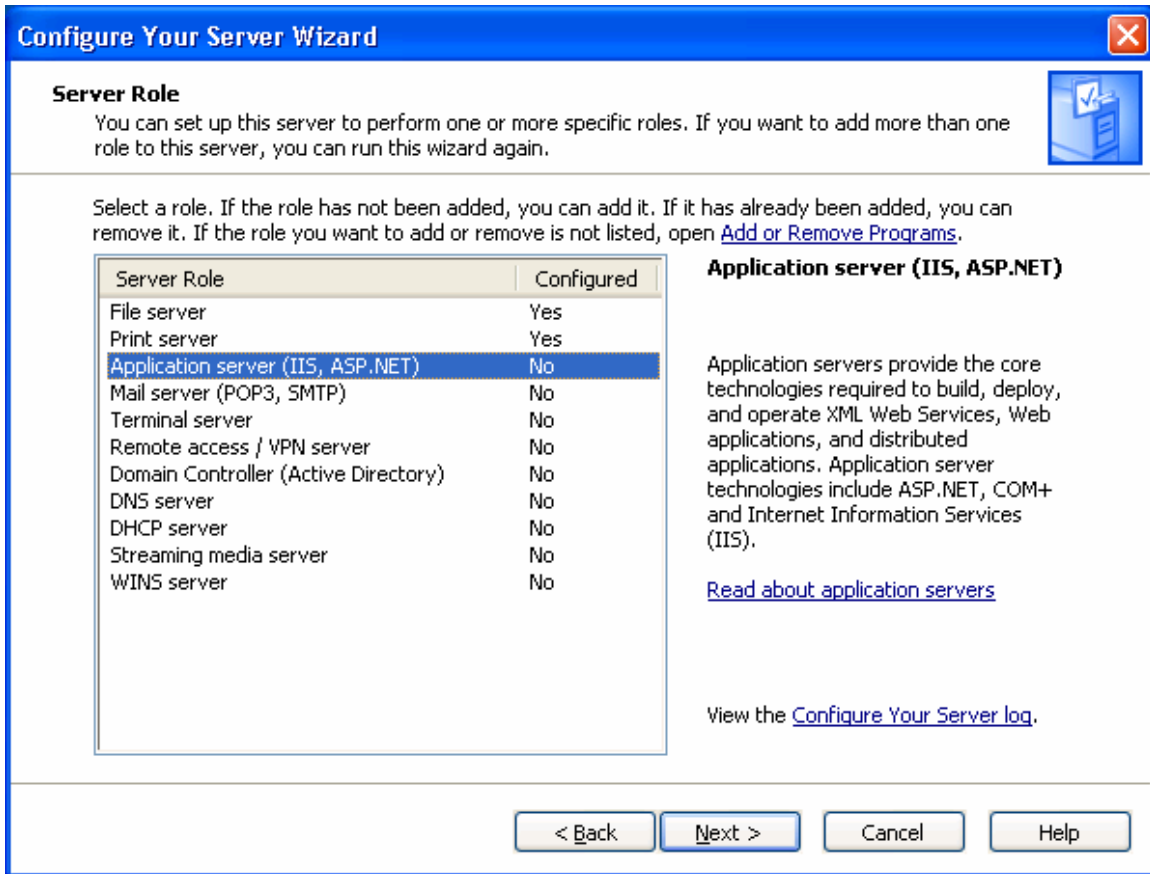
If you are intended to you a FTP using IIS, you can click the Details button and go to the following window. Then tick File Transfer Protocol (FTP Service). Click OK.



Click Next and have your Windows 2000/XP/Server 2003 CD ready. Follow the prompts and you will have IIS installed in your system.

Installing IIS in Windows Server 2003

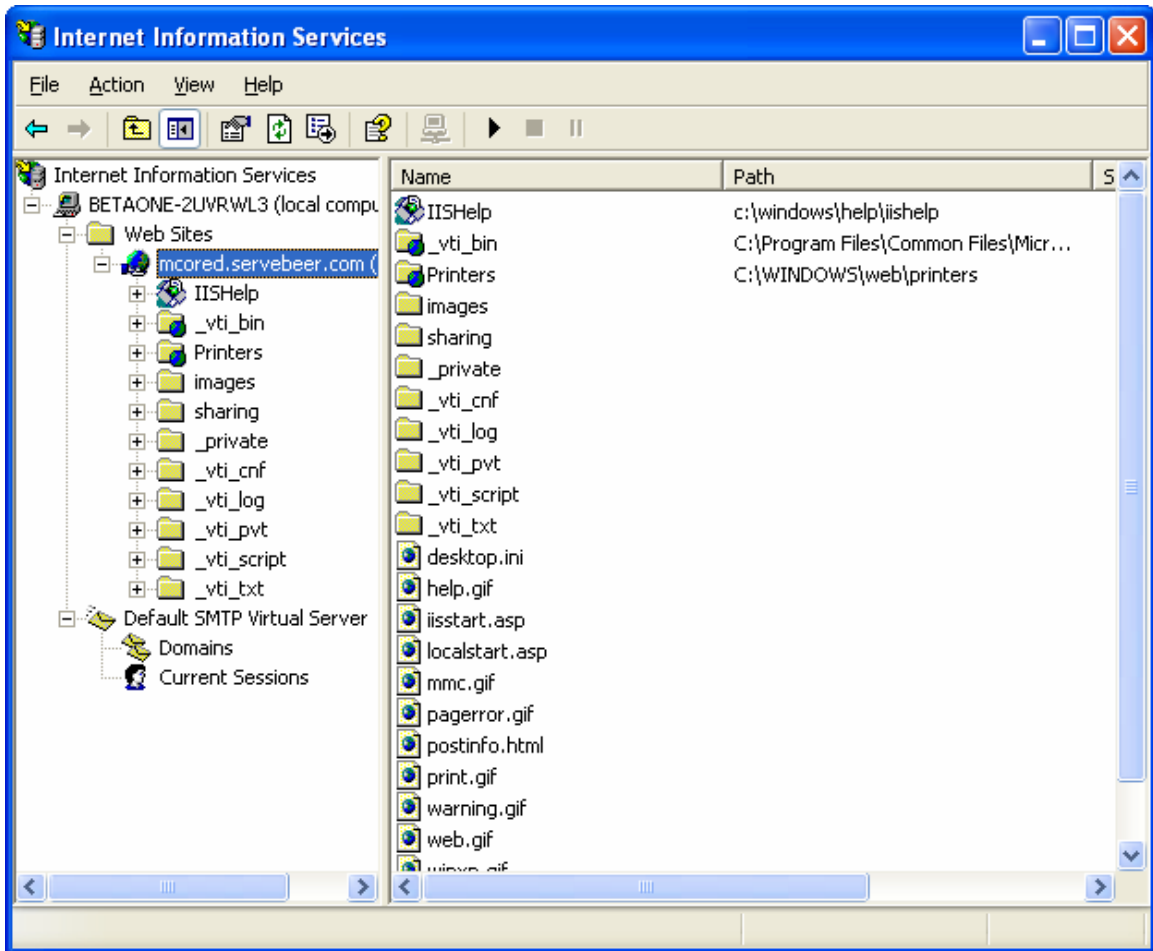
Go to Start > Administrative Tools > Configure Your Server Wizard
Press Next until you get the following screen



Click Application server (IIS, ASP.NET) and press Next
Enable FrontPage Server Extensions and ASP.NET (optional)
Follow the prompts and you will have IIS6 installed in your system.

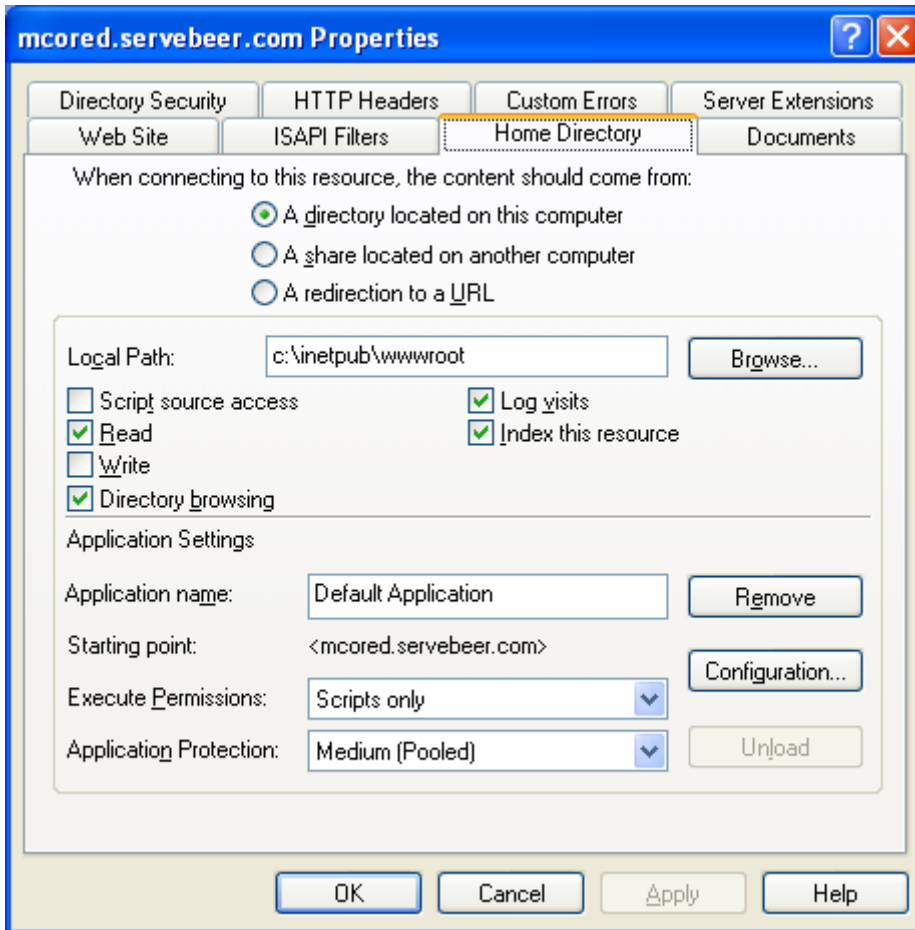
Setting up the server

Go to Administrative Tools > Internet Information Services



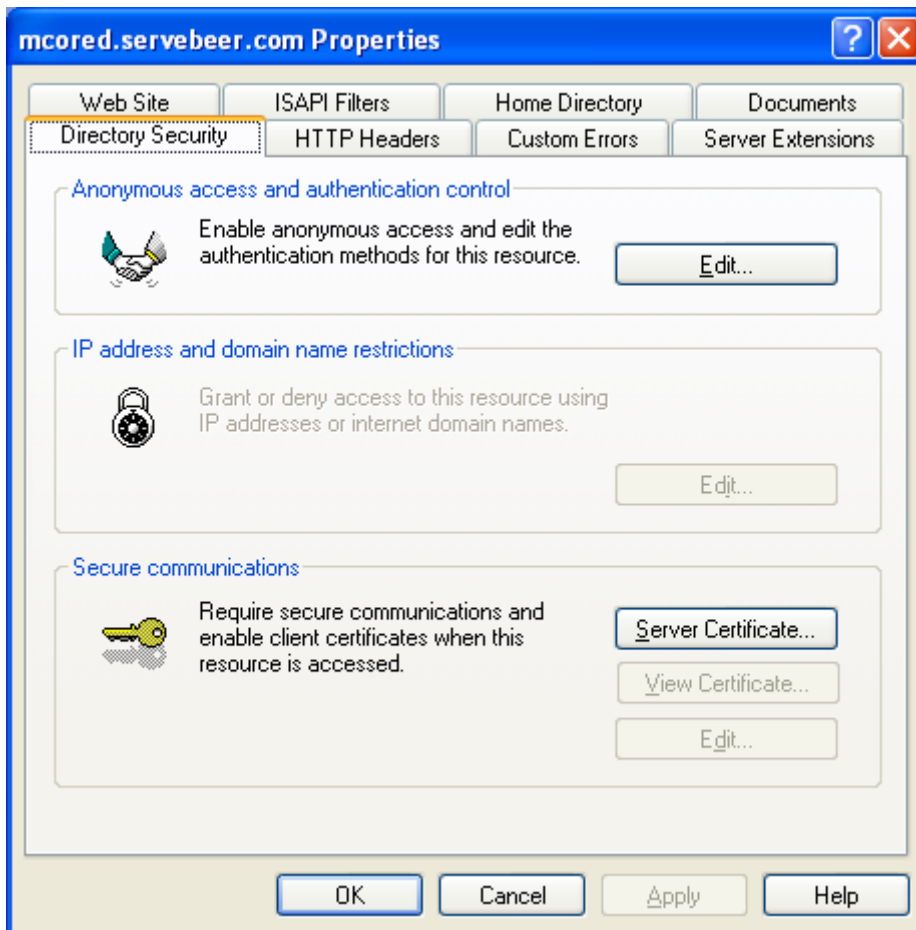
Right Click your site name (mcored.servebeer.com in my case).

Click Properties

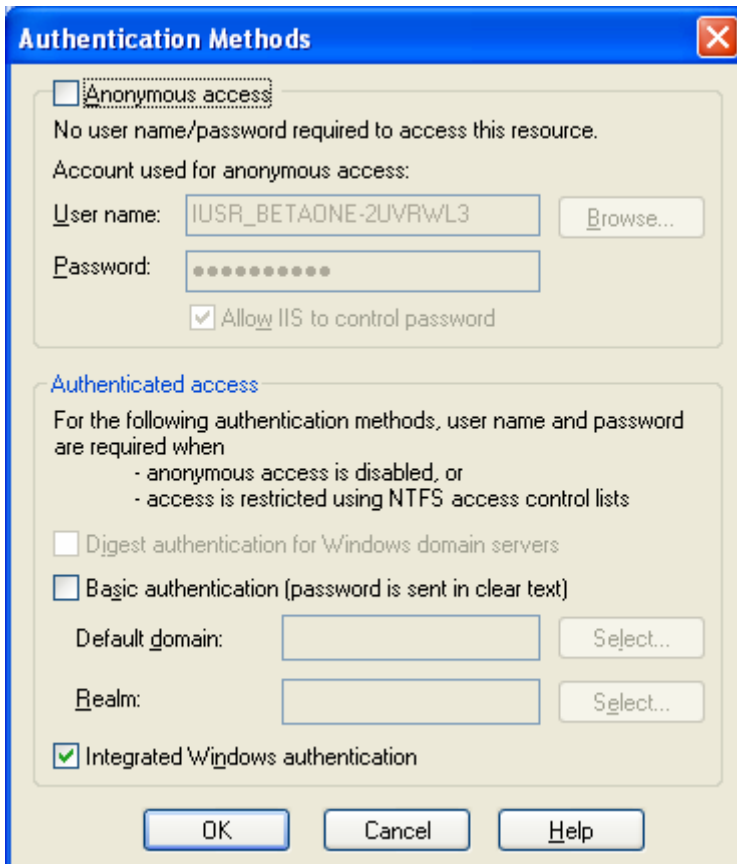


Tick Directory browsing

Go to Directory Security



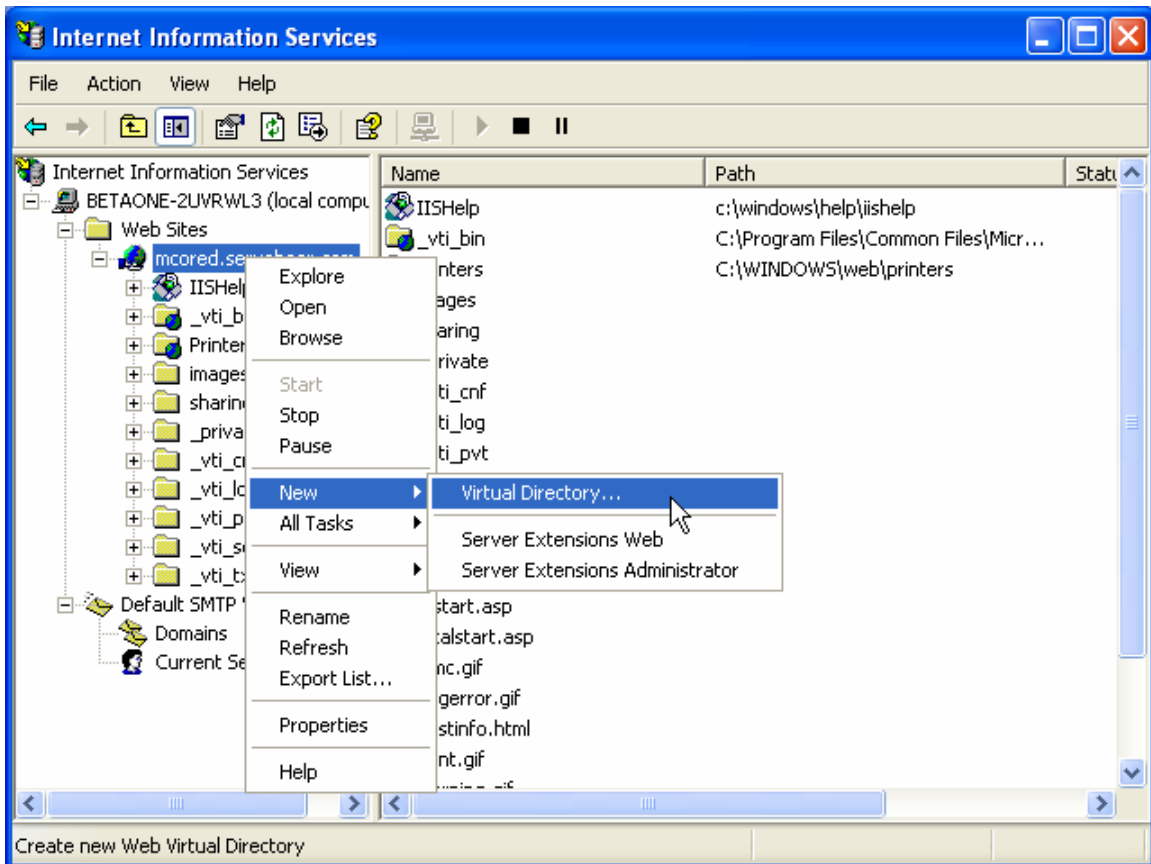
Press Edit



Uncheck Anonymous access
Tick Integrated Windows authentication
Press OK and then again OK

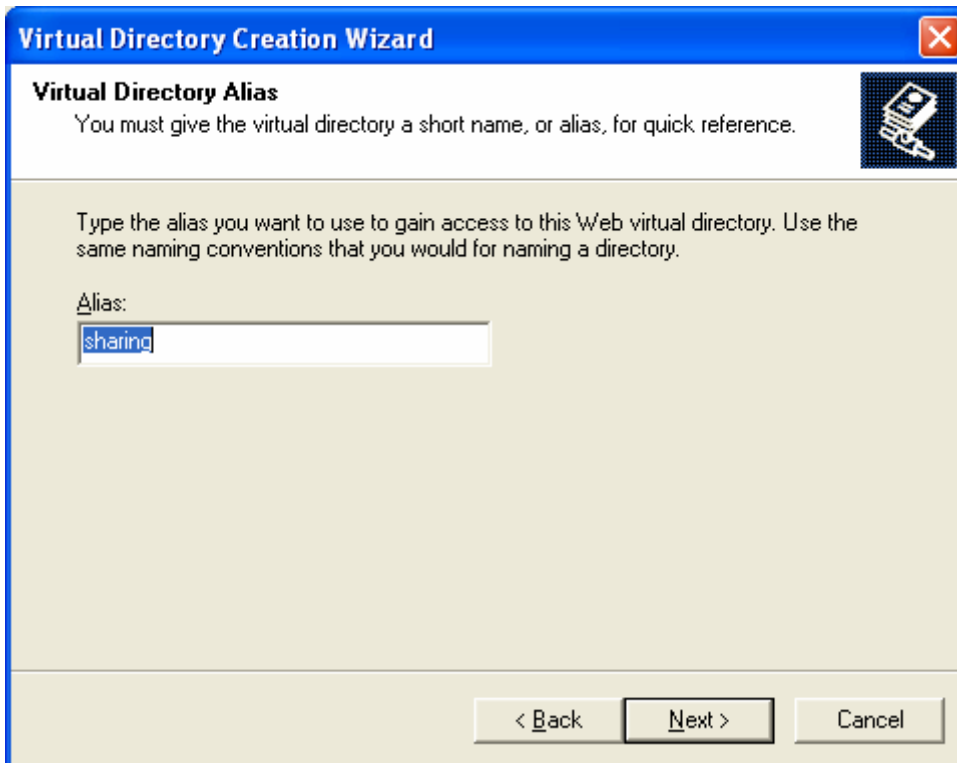
Adding folders

Your root folder will be located at **%HOMEDRIVE%\Inetpub\wwwroot**
To add subfolders, right click your web site and click New > Virtual Directory

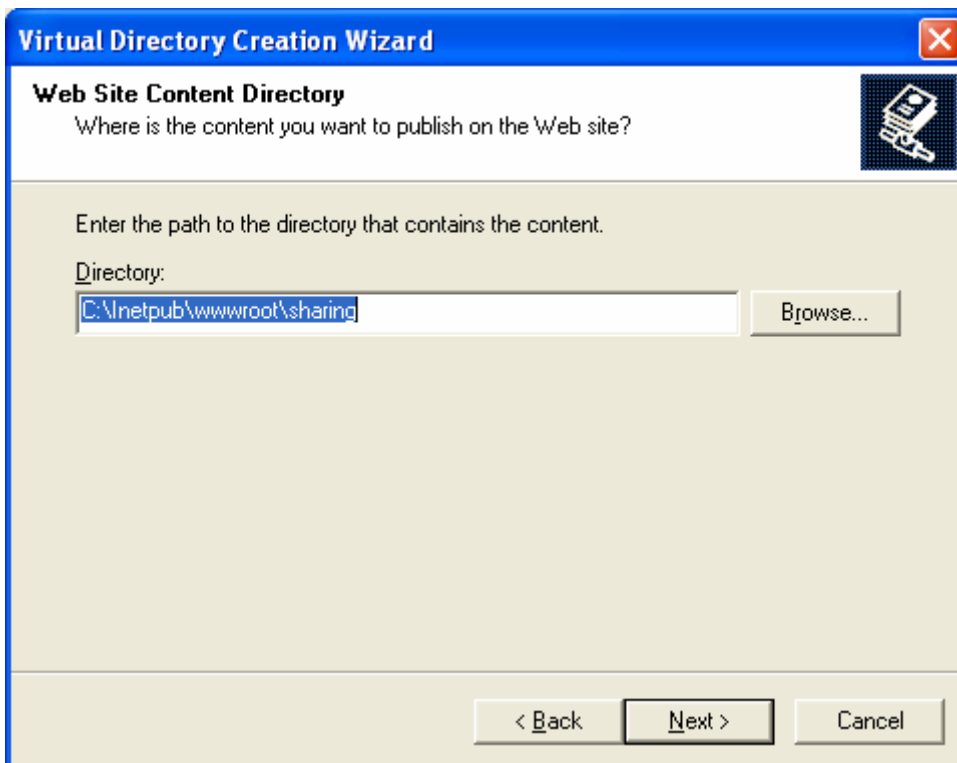


This method will provide you with more options while creating a subfolder than just creating it in Windows Explorer

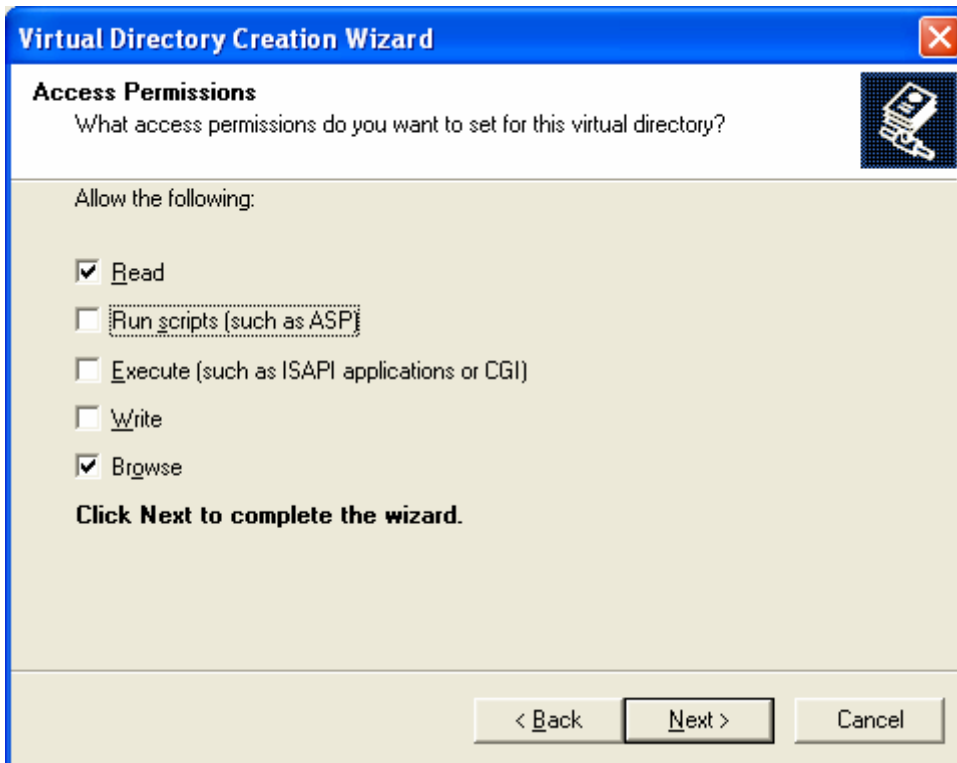
For Alias, type the folder name you are going to Browse/Create



Click the Browse button and create the relevant directory



Set permissions for the folder



Configuring user accounts

Go to Command Prompt

The following is a quick way to add users with powerful user passwords

```
C:\ D:\WINDOWS\system32\cmd.exe
Microsoft Windows [Version 5.2.3790]
(C) Copyright 1985-2003 Microsoft Corp.

D:\Documents and Settings\McoreD>net user "Zarax" /add /random
Password for Zarax is: -erLn0N1

The command completed successfully.

D:\Documents and Settings\McoreD>_
```

Alternatively you can use standard User Account window or **control userpasswords2** (in Start > Run) to configure your users.

Installing NO-IP DUC

This section is optional. If you have a static IP address you can use your IP address as your domain.

However if you have a dynamic IP address, then it might be a good idea to get a free host name from www.no-ip.com. The reason for choosing NO-IP is, they have a software that can be installed as a service in the local computer which will automatically detect whenever the IP address changes and update your host names.

Register with www.no-ip.com and obtain a password.

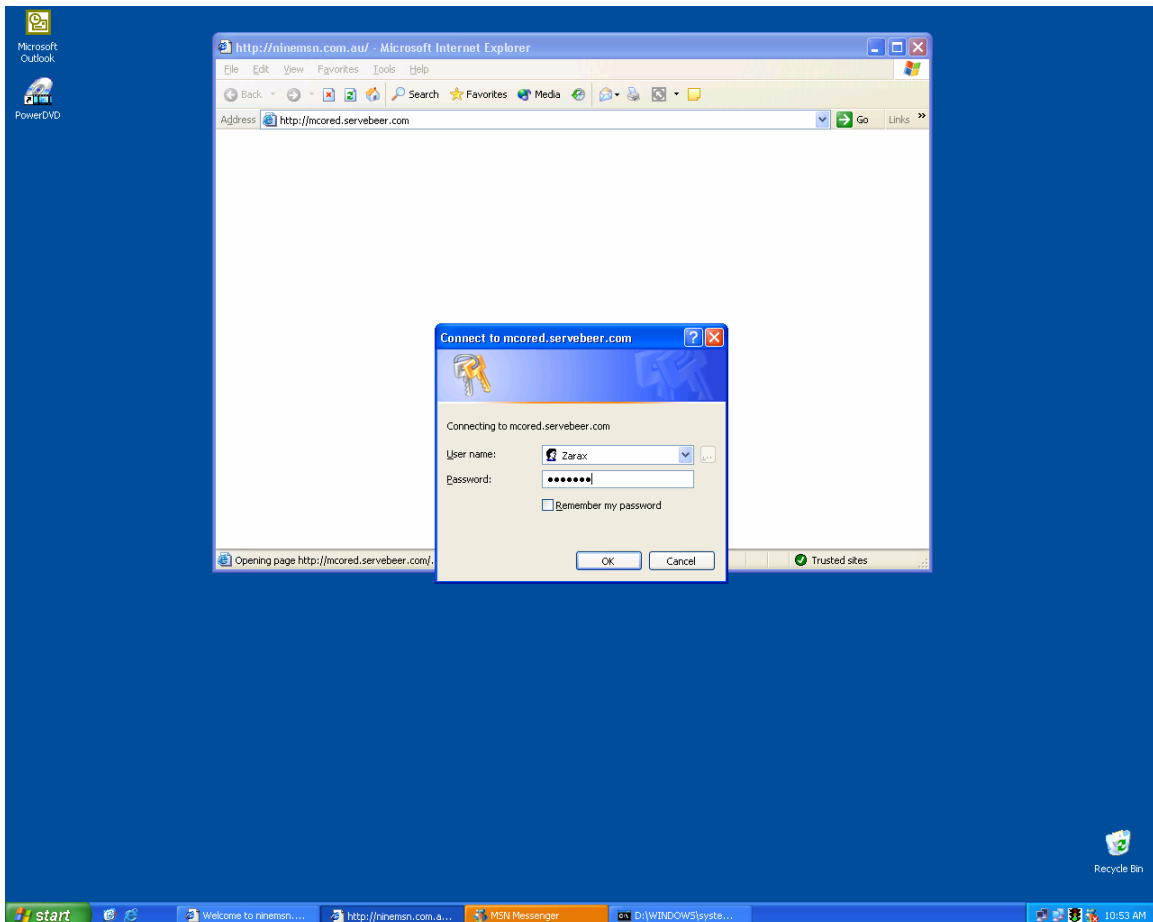
Your username will be your email address.

Use this login details after the installation of NO-IP DUC.

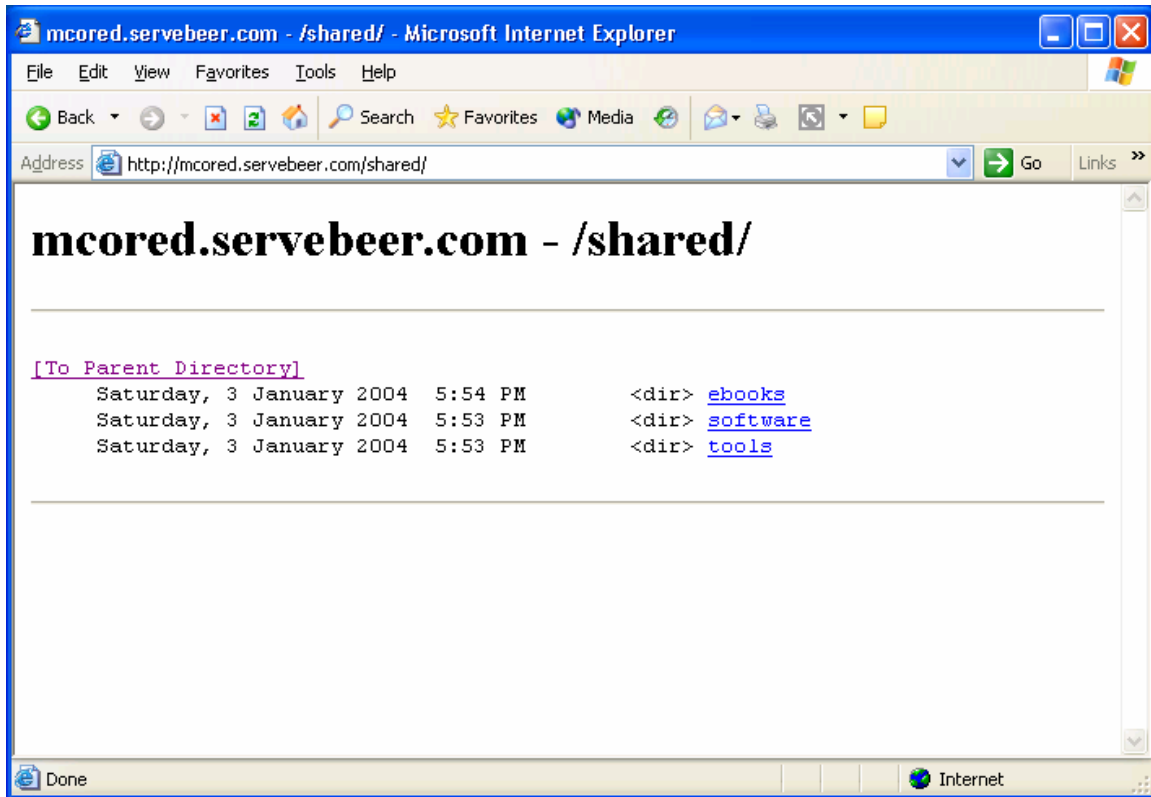
In Windows 2000 or XP you can run NO-IP DUC as a system service.

Testing your server

If you have successfully followed the guide, you will see a dialog box when accessing your server.



When the correct username and password is given you will be able to access the server



Congratulations!

You have successfully set up a HTTP Server using IIS with basic Windows User Account integration. 😊