



# Preconfigured jiGGafellz's EAC

Version 1.1.3.4

This manual guides you through the initial steps you will need to follow to start using the preconfigured EAC according to jiGGafellz's settings.

**McoreD**  
**2007-06-08**

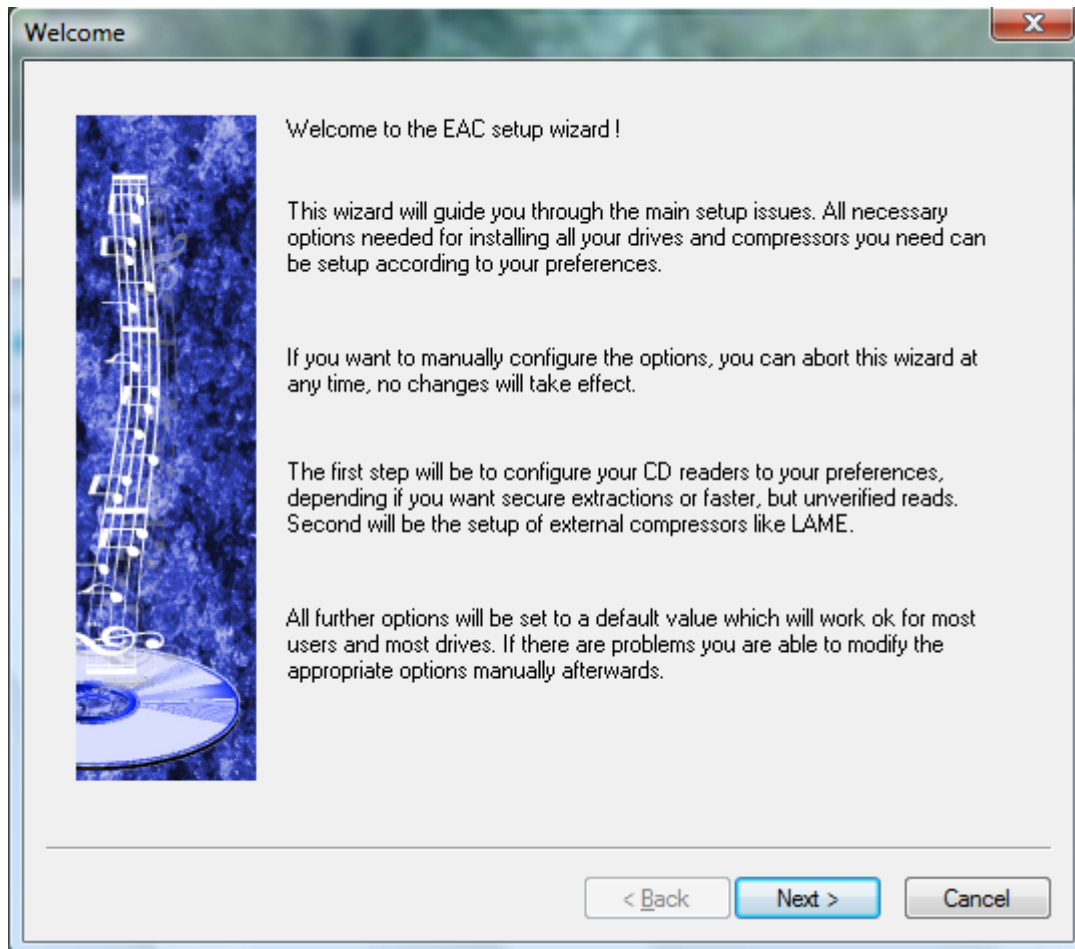
## Getting started

To eliminate any previous settings delete **HKEY\_CURRENT\_USER\Software\AWSsoftware** from registry

Download the latest preconfigured EAC from <http://wmwiki.com/mcored/research/eac/?M=D>

Extract **EAC-x.x.x.x-jiGGafellz.zip** and run EAC.exe

Cancel the Wizard

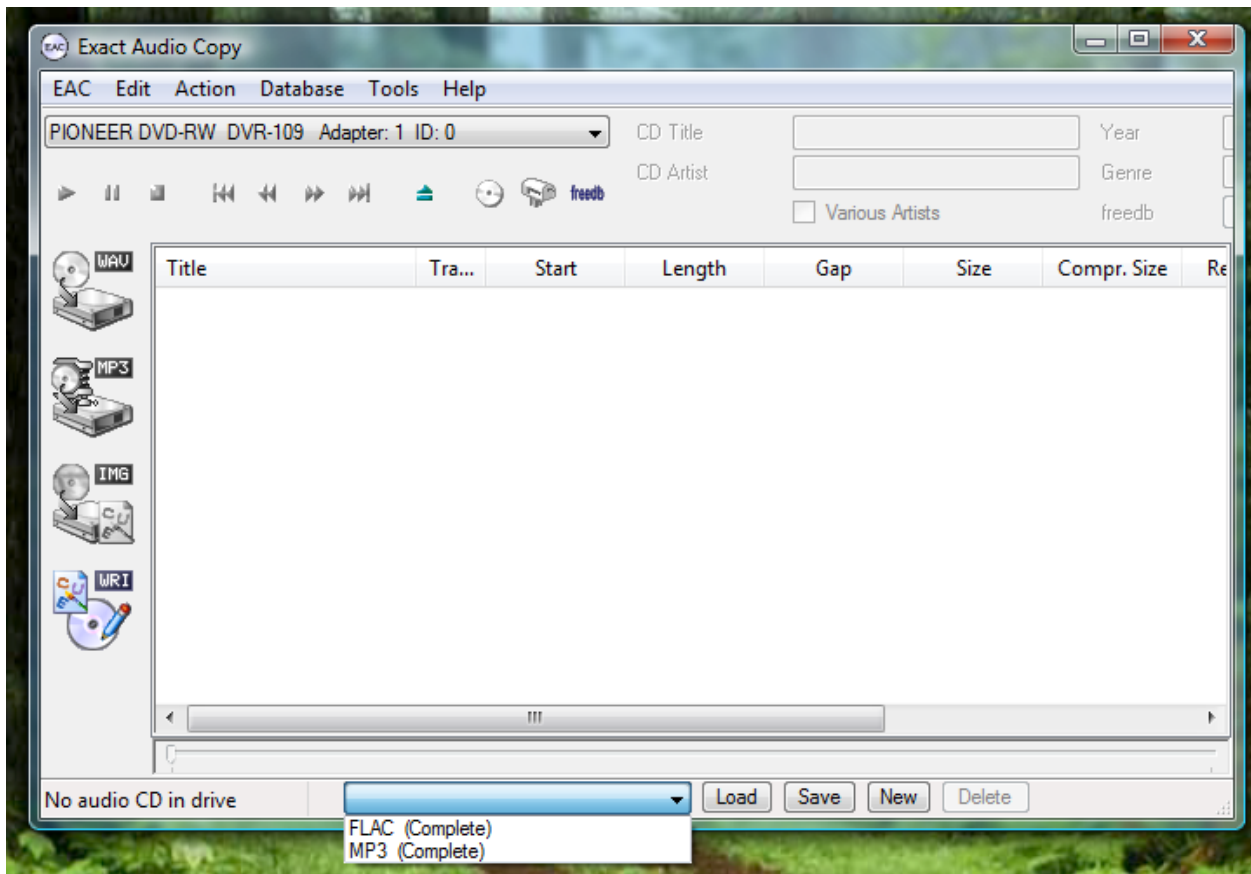


## Customize the profiles

You are required just 3 settings to customize for each profile FLAC, MP3 etc. Everything else is preconfigured according to <http://jiggafellz.isa-geek.net/eac/>.

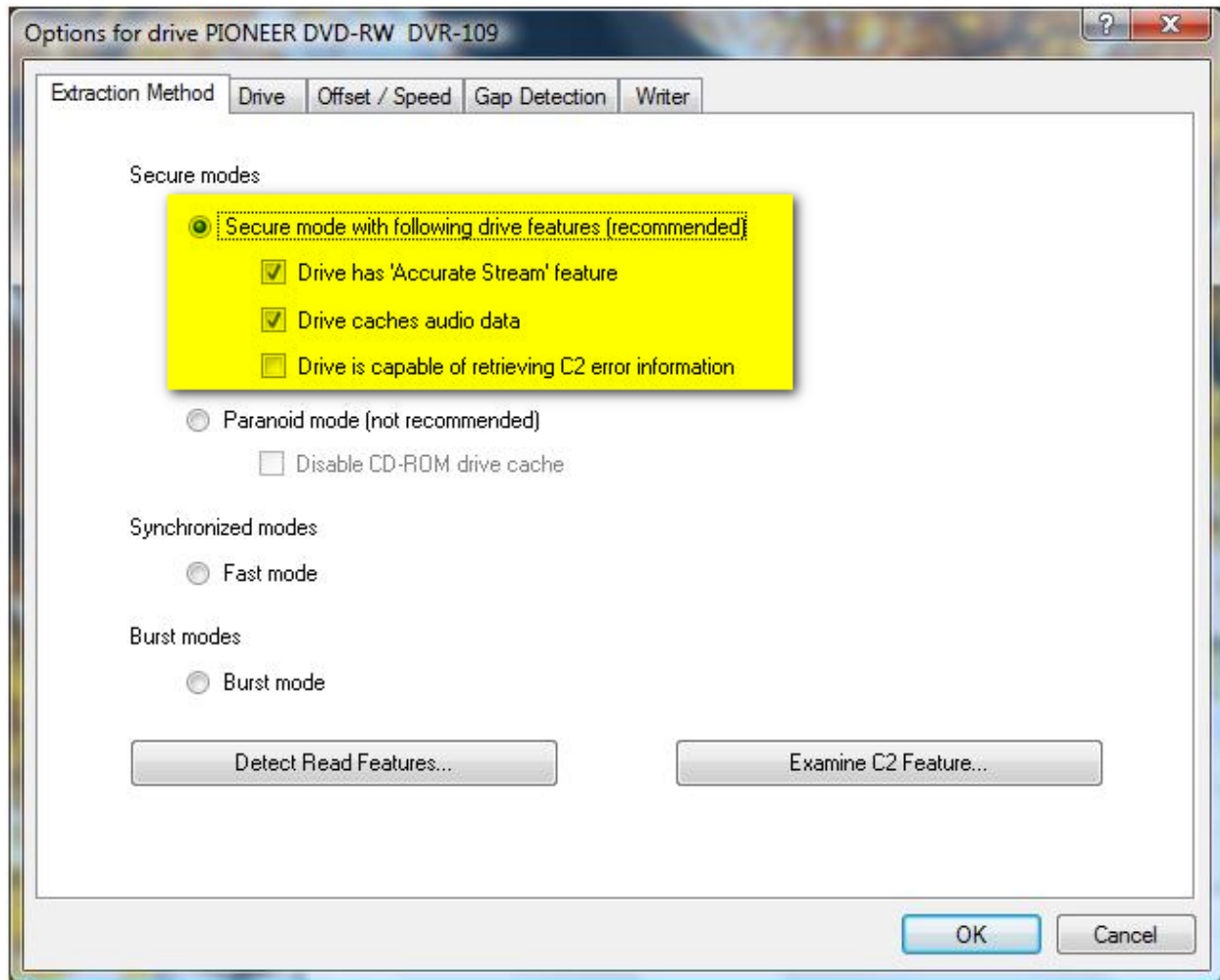
1. Drive Options: Extraction Method: Secure Modes (if your drive is not in Adapter 1 ID 0)
2. Drive Options: Offset/Speed: Read sample offset correction
3. Compression Options: External Compression: encoder file path

Load FLAC profile

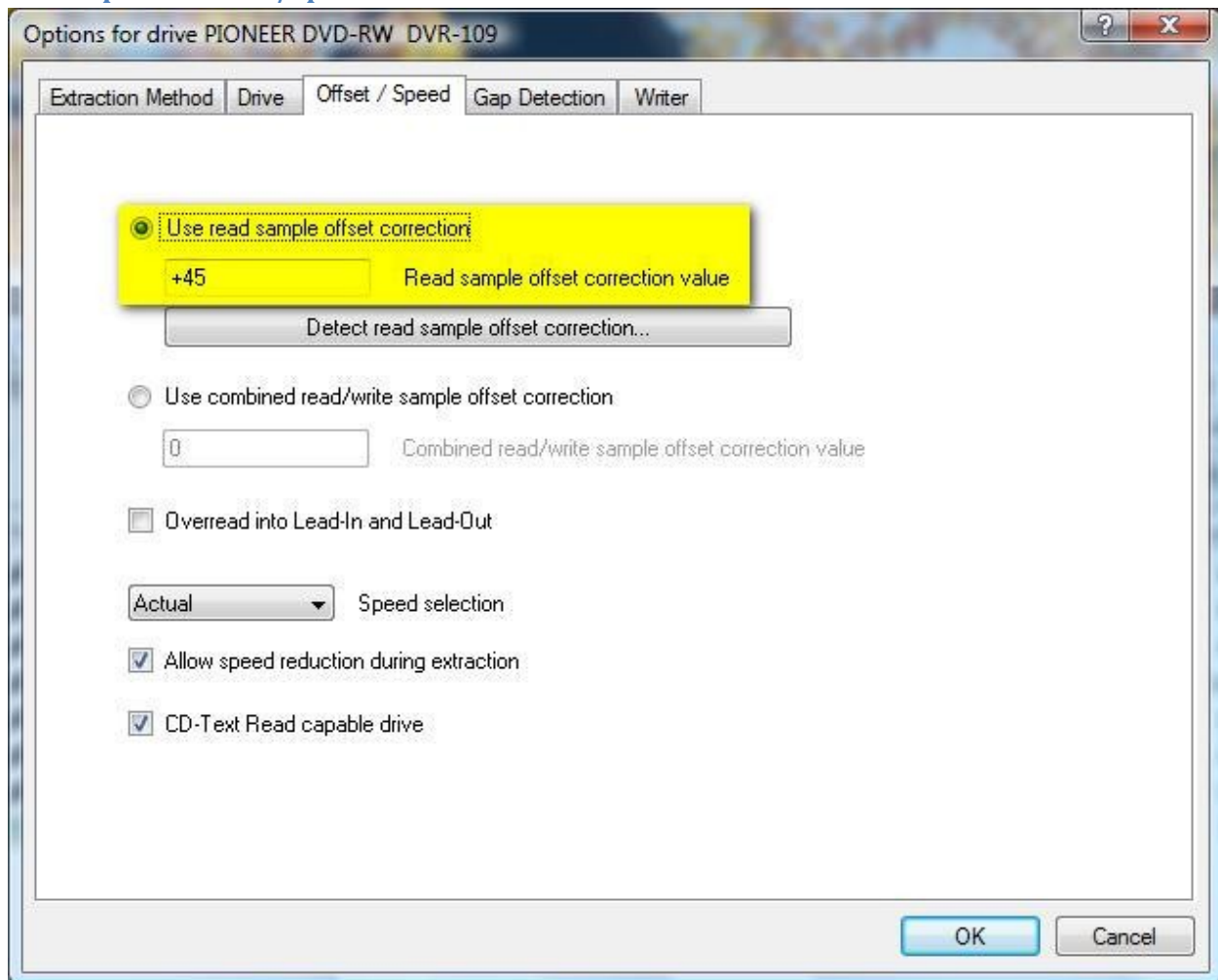


## Drive Options: Extraction Method

Just make sure you have the following set as below

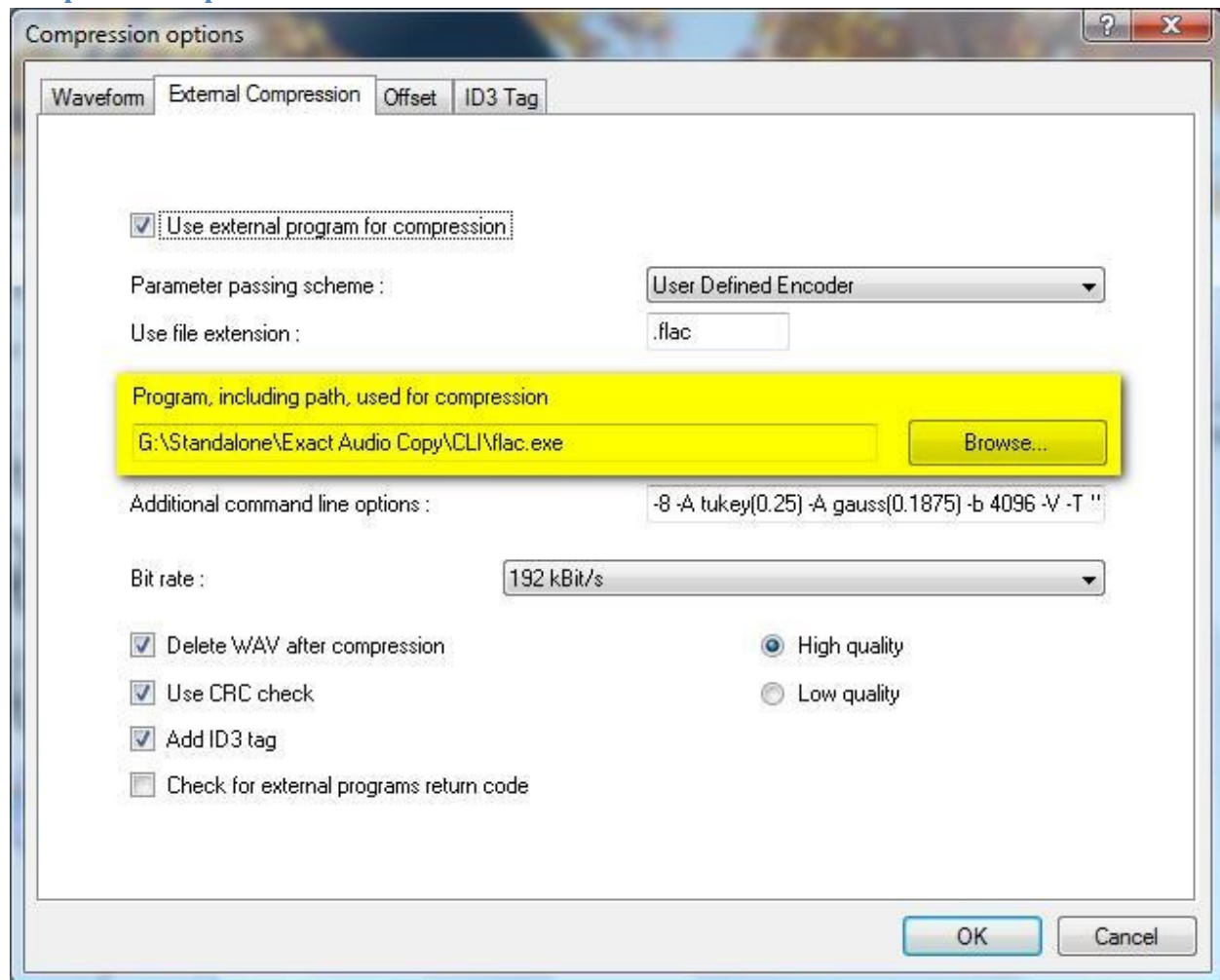


## Drive Options: Offset/Speed



Find your DVDRW offset from <http://www.accuraterip.com/driveoffsets.htm> and modify the offset.

## Compression Options



Browse for the location of flac.exe

Repeat the process for MP3 etc. profiles.

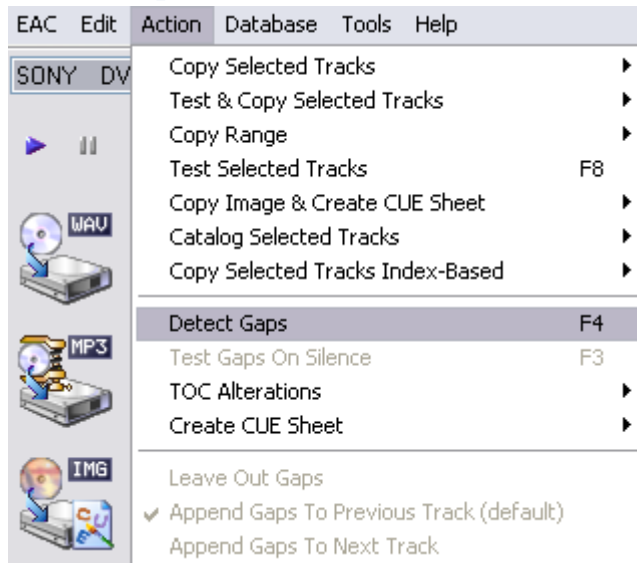
## Tips

### EAC Options

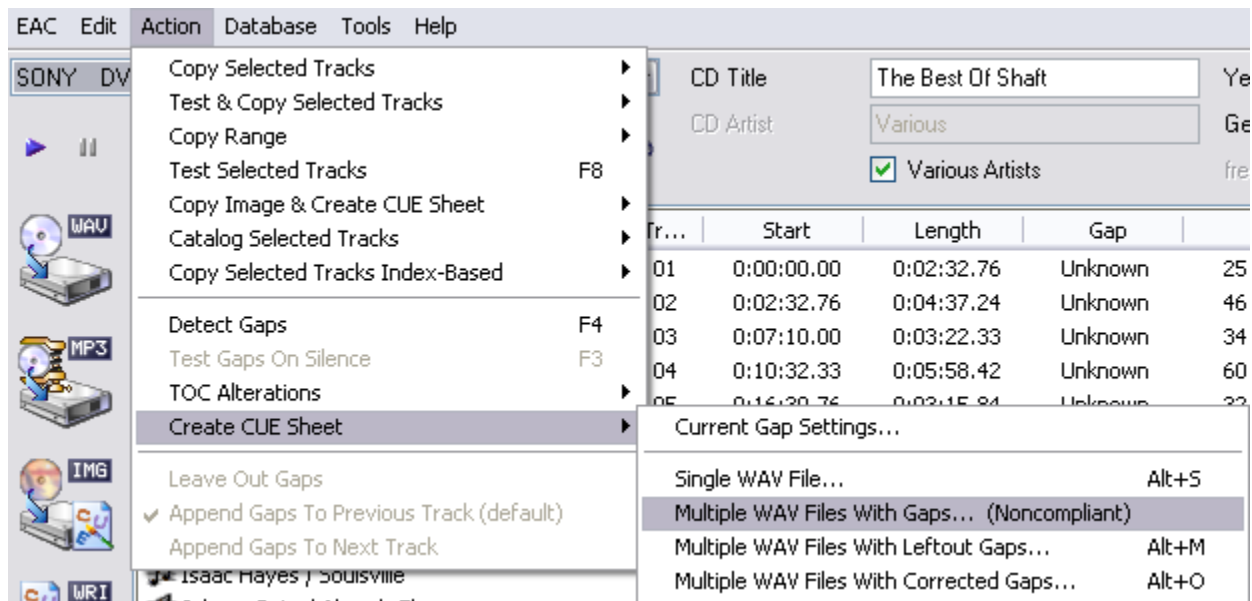
In Tools tab you can hide the external compression window to avoid the risk of being accidentally closed, however you will not know how much of a file still need to be compressed.

# Ripping Audio CD

## Detect Gaps



## Create CUE Sheet



## Test and Copy Tracks

The screenshot shows the Exact Audio Copy (EAC) software interface. The title bar reads "Exact Audio Copy - Laliya / Just Like River". The menu bar includes "EAC", "Edit", "Action", "Database", "Tools", and "Help". The "Action" menu is open, showing options such as "Copy Selected Tracks", "Test & Copy Selected Tracks", "Copy Range", "Test Selected Tracks", "Copy Image & Create CUE Sheet", "Catalog Selected Tracks", "Copy Selected Tracks Index-Based", "Detect Gaps", "Test Gaps On Silence", "Create CUE Sheet", "Leave Out Gaps", "Append Gaps To Previous Track (default)", and "Append Gaps To Next Track". The "Test & Copy Selected Tracks" option is selected, and a sub-menu is open, showing "Uncompressed..." (F6) and "Compressed..." (Shift+F6) options. In the background, a table of track data is visible, showing columns for "Start", "Length", and "Gap".

Start	Length	Gap
00:00.00	0:05:57.13	0:00:02.00
05:57.13	0:05:56.24	0:00:01.85
11:53.37	0:05:42.10	0:00:01.85
17:35.48	0:07:36.28	0:00:01.85
25:11.76	0:04:49.46	0:00:01.85
30:01.22	0:06:35.94	0:00:01.85
36:37.17	0:06:31.88	0:00:01.85
45:41.05	0:05:30.57	0:02:32.00